



JX3000

Improving caregiver and patient experience

Fixed height on examination table may restrict patient's access and impact the healthcare delivery.

Why is height adjustment in examination table recommended?*

- 44% of practice administrators reported that portions of an examination were omitted when faced with barriers during the assessment of patients with disabilities.
- 76% of practice administrators indicated that patients were examined in wheelchairs when they could not transfer themselves onto an exam table.

The JX3000 features adjustable height for easy access, ensuring comfort for all patients, including those with limited mobility. Its stable design supports smooth positioning, including Trendelenburg and Reverse Trendelenburg options, enhancing examination efficiency. Castors ensure easy mobility, making it practical for any clinical setting.

Advanced Patient Positioning Features



Elevated backrest



Maximum height



Minimum height



Trendelenburg



Reverse Trendelenburg

Standard Features:



Castors

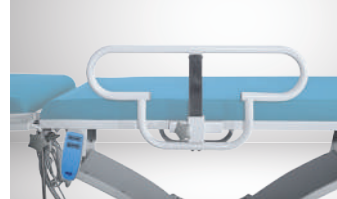
Castors allow for easy relocation of JX3000



Paper roll holder

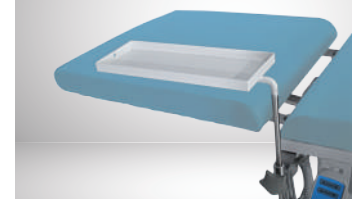
To minimize surface contamination

Add-On Accessories:



Safety Side Rails

Single piece can either be installed on either side of the couch



BP apparatus tray

Height-adjustable BP tray



Battery backup for uninterrupted power supply

*± 10 mm Engineering Variation ** ± 2° Engineering Variation

^When couch is configured with standard accessories

Technical Specifications

Overall dimensions: 2040 mm x 660 mm L x W

Minimum height: 505 mm, Maximum height: 855 mm

Back support angle: 0° - 65°

Trendelenburg & reverse trendelenburg: 19°

Upholstered platform width: 600 mm

Back rest length: 630 mm

40 mm diameter castors

Motorized height, trendelenburg and reverse trendelenburg positions operated by handset

Backrest adjustable over gas spring mechanism

Safe working load: 170 kg

Two section fixed rexine upholstered top 65 mm thick

Antibacterial, antifungal and fire retardant upholstery rexine

Electrical Parameters

Power in (Mains Power Supply): 100 V to 240 V 50/60 Hz, Max 2. A.

Electrical Shock Protection: Class 1

Degree of Shock Protection: Type B

Liquid Ingress Protection: IPX6

Duty Cycle: 10% (Two minutes for every eighteen minutes)

Safety Standards

General safety for medical electrical equipment	IEC 60601-1-1
EMI/EMC	IEC 60601-1-2
General safety for medical equipment	IEC 60601-2-52

Upholstery Colour Options



Moss



Navy



Raisin Grape



Pista



Healing Waters



Robust Brown



Shadow



Scan here to access the digital copy of this flyer

*The Exam Chair's impact on Patients and Providers

[//www.midmark.com/medical/resource-library/blog/the-exam-chair's-impact-on-patients-and-providers](http://www.midmark.com/medical/resource-library/blog/the-exam-chair's-impact-on-patients-and-providers)

Midmark (India) Private Limited

Head Office: Art Guild House, FOF, B-16, "B" Wing, 4th Floor, Phoenix Market City, LBS Road, Kurla (West), Mumbai - 400 070.
Toll Free: 1800 22 80201 Tel: +91 22 4915 3000 Fax: +91 22 4915 3100 | www.midmark.in india@midmark.com

JX3000:06:12:08:24

